

# Master Half-Size Electric Convection Oven

Project \_\_\_\_\_  
 Item \_\_\_\_\_  
 Quantity \_\_\_\_\_  
 CSI Section 11400  
 Approved \_\_\_\_\_  
 Date \_\_\_\_\_

## Models

- MCO-E-5-C
- MCO-E-25-C



Model MCO-E-5-C

NOTE: Ovens supplied with casters must be installed with an approved restraining device.

## Standard Features

- Master 200 Solid State Control with 150° (66°C) to 500°F (260°C) temperature range
- 2-Speed 1/3 HP motor with thermal hi-limit and centrifugal switch protection
- 208 or 240 volt, single or three phase (please specify)
- Total of 5.6 kW elements per oven cavity
- Stainless steel front, sides, and top
- Single door with double pane thermal window
- 4" (102mm) stainless steel legs with adjustable bullet leveling leg insert.
- Porcelain enameled oven interior
- 5 chrome plated oven racks on 9-position rack guides
- Double deck models available -Suffix 25-C
- 1 year limited parts & labor warranty (USA & Canada only)
- 5 year limited door warranty, excluding window (USA & Canada only)
- 2 year limited parts & 1 year labor warranty (USA only)
- 2 year limited parts & labor warranty (USA Kindergarten to Grade 12 schools only)

## Optional Features

- 7.5 kW elements
- Extra oven racks
- Stainless steel main back
- Solid stainless steel door, (no charge)
- Stainless steel equipment stand 34" (864mm) high with rack guides. (only for single deck models only)
- 21 1/4" (540mm) stainless steel legs (double deck models only)
- Cord and plug set
- Swivel casters w/front brakes (single decks overall height 31 3/4" (806mm) double stacked units overall height 57" (1448mm)  
(Note: Casters can not be installed onto stands or stacked models with 21 1/4" legs.)

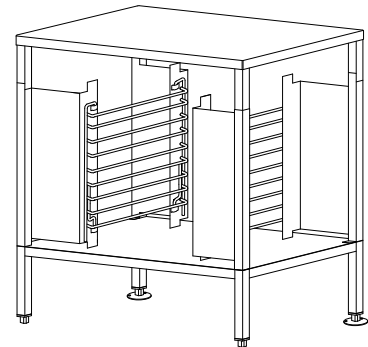
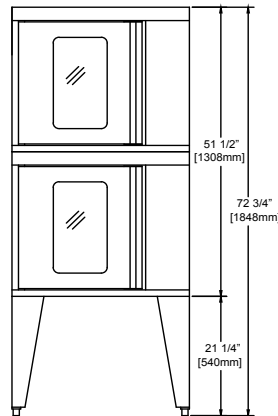
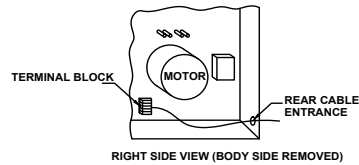
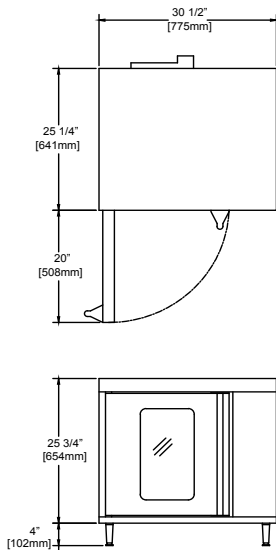
## Specifications

Garland Master Half-Size electric convection oven.  
 5.6 kW/cavity, 1/3 HP fan motor with two-speed control.  
 Porcelain enameled oven, 5 oven racks and 9-position rack guides, measures 15-1/2" (470mm)W x 20" (508mm)H x 21-1/8" (536mm)D. Stainless steel front, top, and sides. UL, CUL and NSF Listed.



Master Half-Size Electric Convection Oven

# Master Half-Size Electric Convection Oven



Optional equipment stand for single deck models.  
Stand is 34" (864mm) high.

Model #	Interior Dimensions (per deck)			Ship Wt. Lbs/Kg	Ship Cu Ft
	W	H	D		
MCO-E-5-C	15-1/2" (393mm)	20" (510mm)	21 1/8" (537mm)	340/155	38.5
MCO-E-25-C	15-1/2" (393mm)	20" (510mm)	21 1/8" (537mm)	680/310	77

Package	Total kW	Nominal Amperes Per Line							
		208V/1Ph		240V/1Ph			208V/3Ph		
		208V/1Ph	240V/1Ph	208V/3Ph	240V/3Ph	208V/3Ph	240V/3Ph	208V/3Ph	240V/3Ph
Standard	5.6	27	23	23	12	14	20	12	14
Option	7.5	39	33	23	21	22	20	18	19

Installation Notes:			
Combustible Wall Clearances			
Sides	*1" (25.4mm)	Back	1" (25.4mm)
*Note: Installations beside units with high heat sources it is recommended to leave 6" (152mm) on the right side of oven. Refer to the installation manual for more detail			
Entry Clearance			
Crated	Uncrated		
37" (940mm)	31" (787mm)		

NOTE: Double decks require 2 power supplies please specify electrical characteristics when ordering.

Welbilt reserves the right to make changes to the design or specifications without prior notice.

**Garland Commercial Ranges Ltd.**  
1177 Kamato Road,  
Mississauga, Ontario  
L4W 1X4 CANADA

**General Inquires 1-905-624-0260**  
USA Sales, Parts and Service 1-800-424-2411  
Canadian Sales 1-888-442-7526  
Canada or USA Parts/Service 1-800-427-6668

[www.garland-group.com](http://www.garland-group.com)  
6869  
12/18

